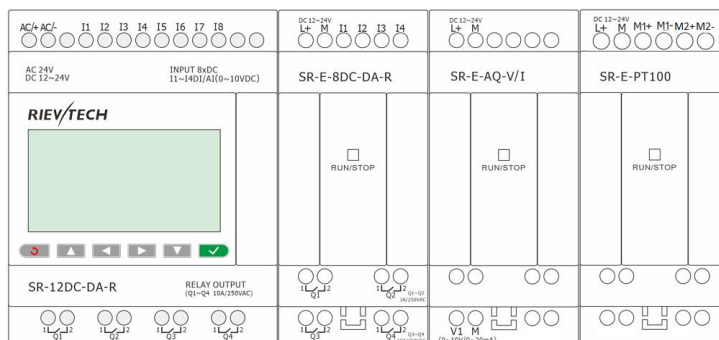
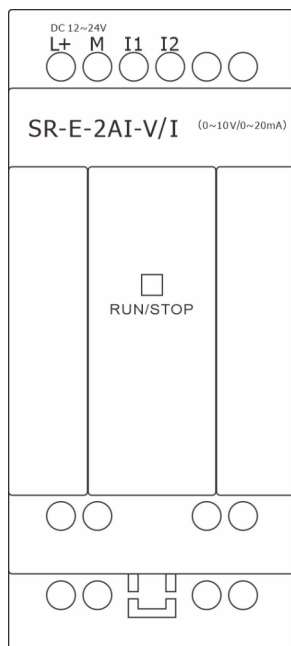


## ◆ Technical Data:

Model: SR-E-2AI-V/I

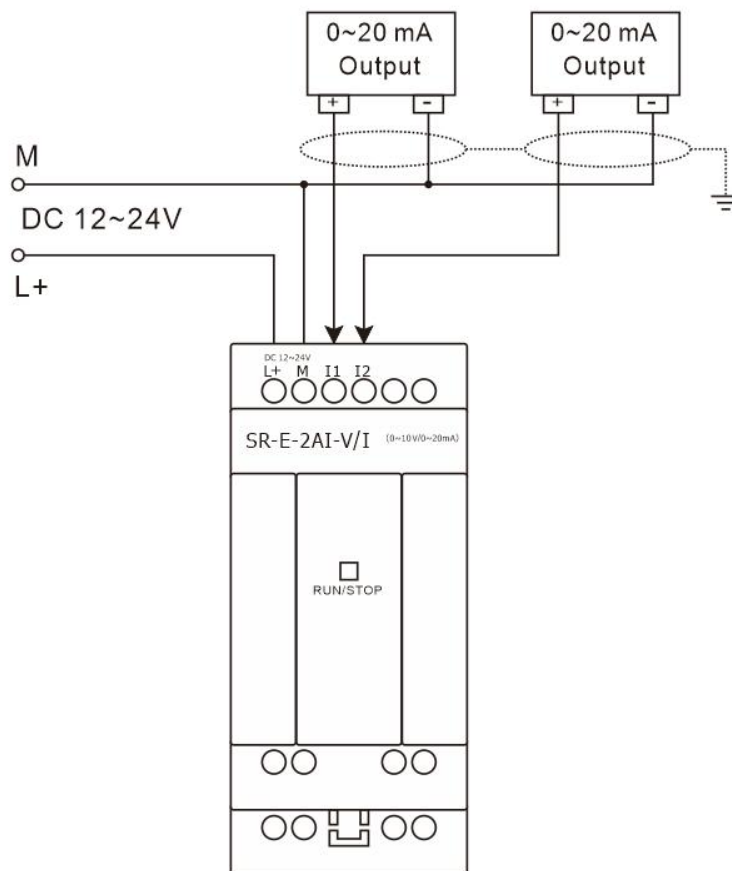
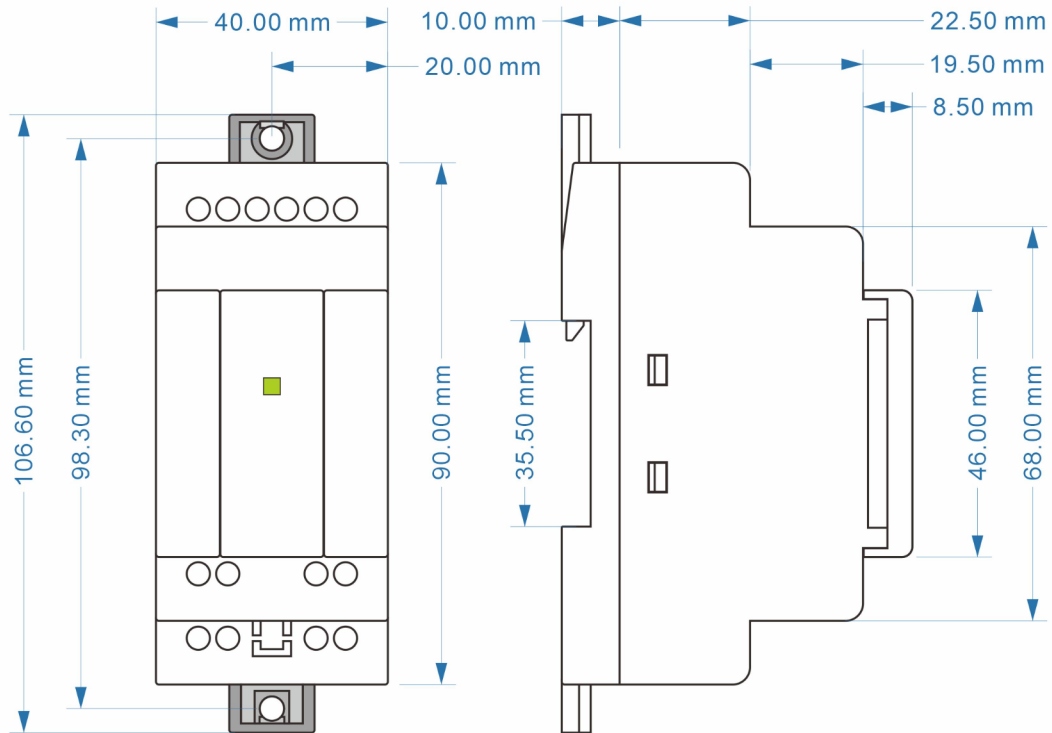


1. Up to 3 pcs extensions can be applied to the SR CPU
2. Up to 16 pcs extensions can be applied to the PR CPU
3. Connection cable length can be customized (Max. 30 Meters for the distance between the end extension and CPU)

## Technical Index

Power supply:	
Nominal voltage	DC 12-24V
Operating limits	DC 10.8-28.8V
Immunity from micro power cuts	Typ.5 ms
Max. Startup current	Max. 0.1A
Max. absorbed power	1 W
Protection against polarity inversions	Yes
Input parameters:	
Input No	2(I1-I2)
Digital input	None
Analogue input	2 (AI1-AI2)
Analogue signal	DC 0...10V/ 0...20mA (Switch on the programming software)
Resolution	0.01V/0.02mA
Accuracy at 25 °C	0.1V/0.1mA
Internal value and signal relationship	AI*1(0..1000)= V1(0...10V)=I1(0...20mA) *= Extension Adr.
Cycle time for analog value generation	Typ. 50 ms
Output parameters:	
Output No	None
Other parameters:	
Line length (shielded and twisted)	Max. 10 m
Mounting	On 35-mm DIN rail, 4 WM wide, or wall mounting
Operation temp.	-20°C-+55°C
Storage temp.	-40°C-+70°C
Weight	93.4g / 129.4g(packaging)

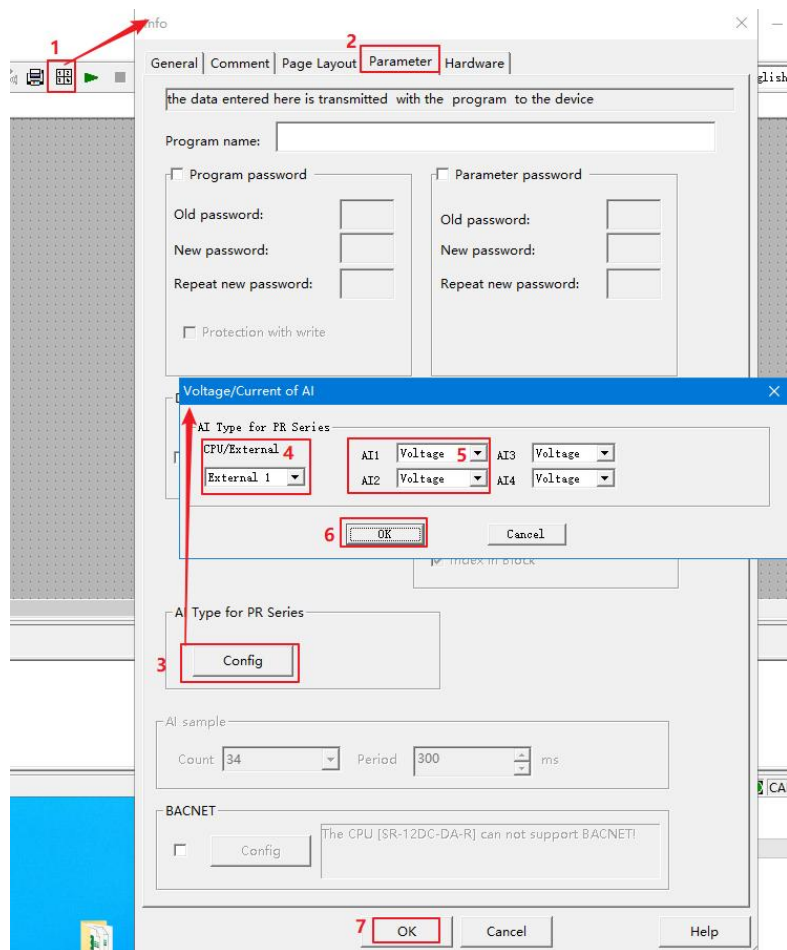
## Installation Dimensions & Wiring Diagram



Switch the analog input signal of I\*1~I\*2 on the programming software, as shown below.

This configuration is downloaded to the PLC follow with the program and takes effect after the PLC is restarted.

## xLogic



## xLadder

